

Chicago Time Trial Series Willow Springs Logistics Map

Access to Parking:

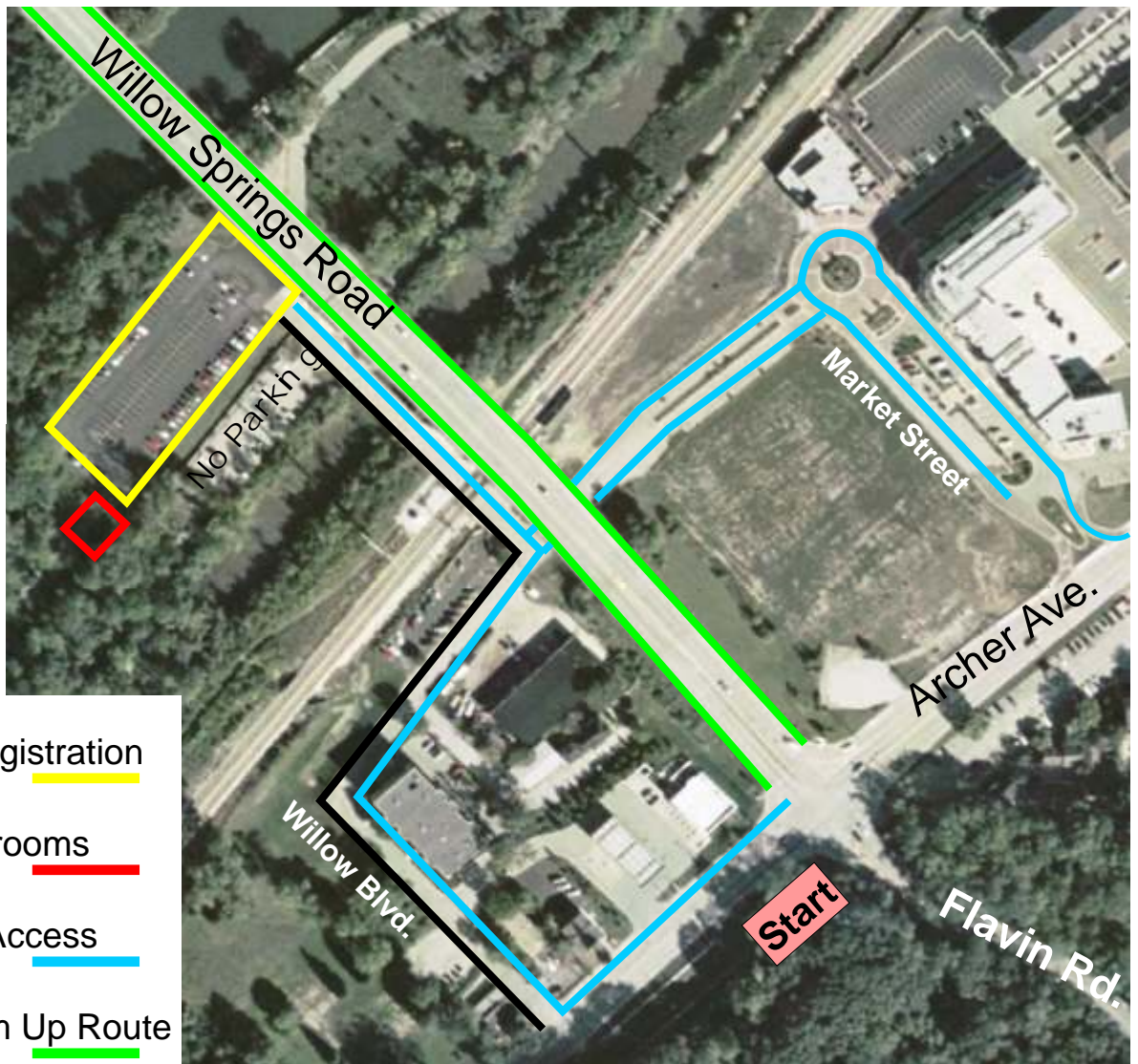
If coming south-east on Willow Springs Road, turn right onto Archer and then right at the next street, Willow Blvd into parking lot.

If coming south-west on Archer Ave. Turn into Market Street, go around the circle, then under the bridge to the parking lot.

When leaving please reverse your route. Go out on Market Street if you came in on Willow Blvd. Go out on Willow Blvd if you came in on Market Street or you will be stuck going the wrong way.

Warm Ups:

If you prefer riding your bike to warm-up, please use Willow Springs Road. It is a long smooth wide stretch of road that will keep you off the race course. The race course will be crowded and warming up outside of the race course area will help.



Parking & Registration 

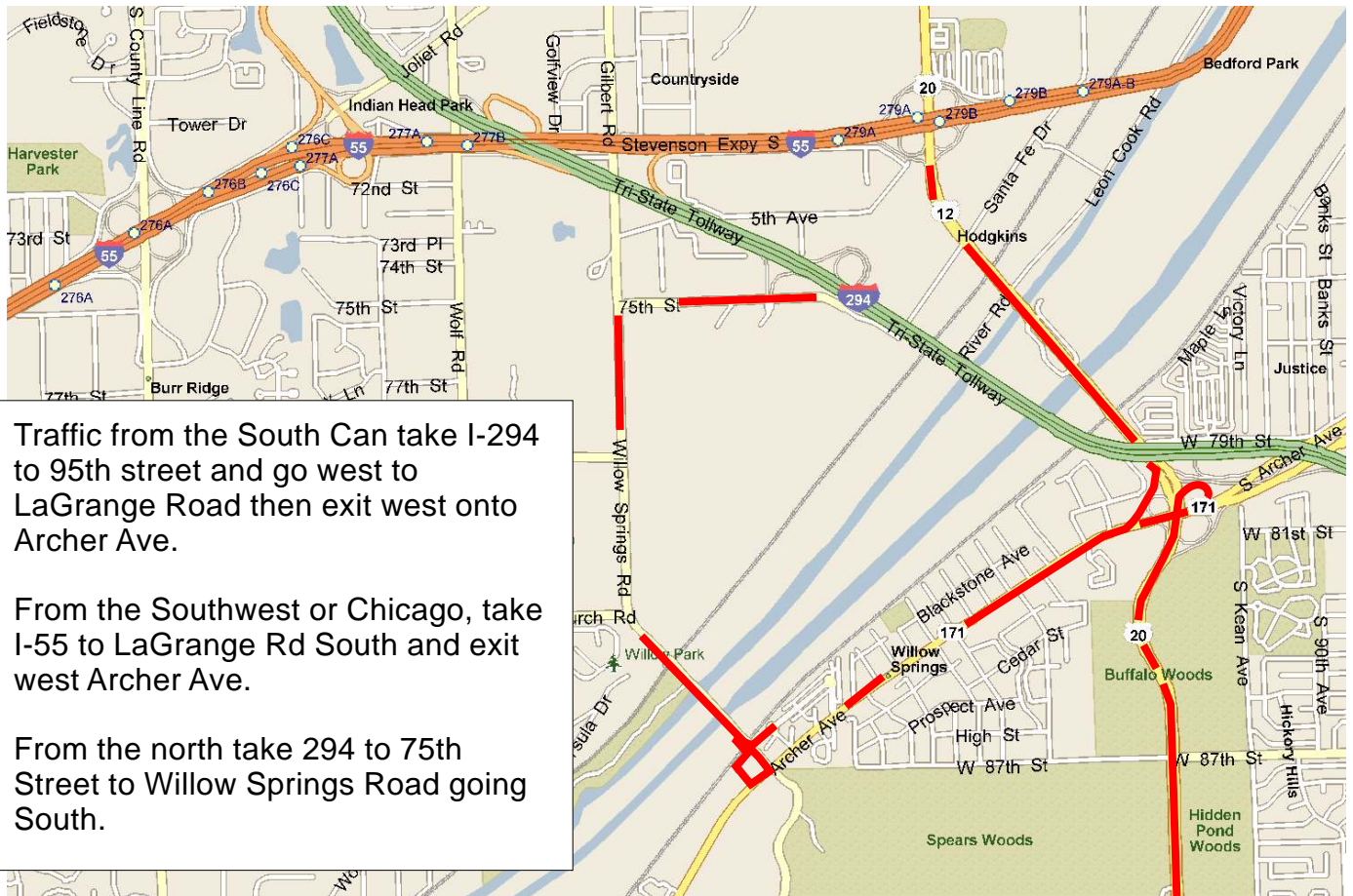
Bathrooms 

Car Access 

Warm Up Route 

Driving directions on page 2

Driving Directions



Weather Related Cancelation

Normally the race will happen rain or shine. However our time trials are on open roads and the racers will be going at times over 30mph in an aerodynamic position. If it is raining hard enough to leave significant standing water on the roads, combined with high gusty winds, there is too much risk that someone could get blow off course or slide into vehicular traffic. Also lightning in the area could create another unacceptable risk that causes a delay or cancellation.

It is difficult to predict before the race the exact conditions on the race course. We will cancel as soon as we are sure the conditions will not be acceptable on race day. However that decision may not come until an hour before the race. If you feel conditions may warrant a cancellation you can call directly to get the status of the race.

Steven Hansen
Cell: 847-971-4290